

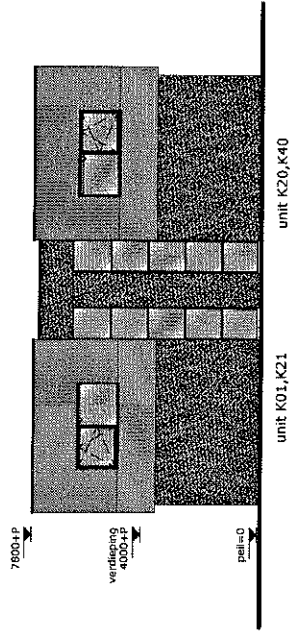
situatie

schaal 1:750

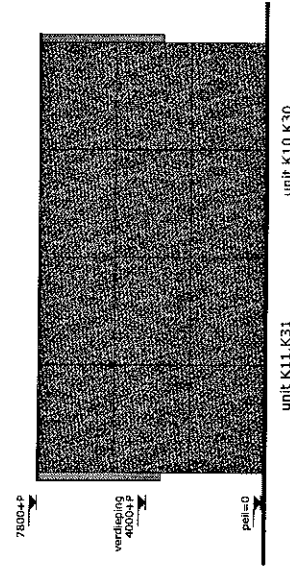
0 5 10 15 20 25m  
 druk- en zetfouten voorbehouden © Arjan Groep bv 2017

TRADEPARK VENNESTRAAT

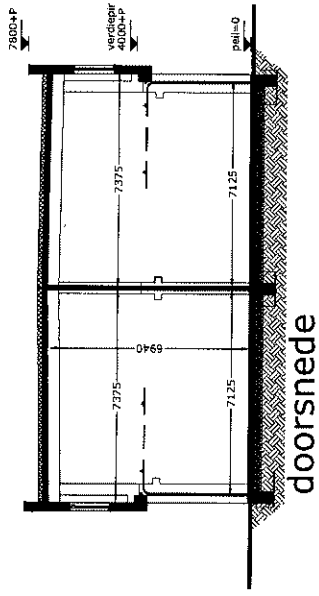
TPV!



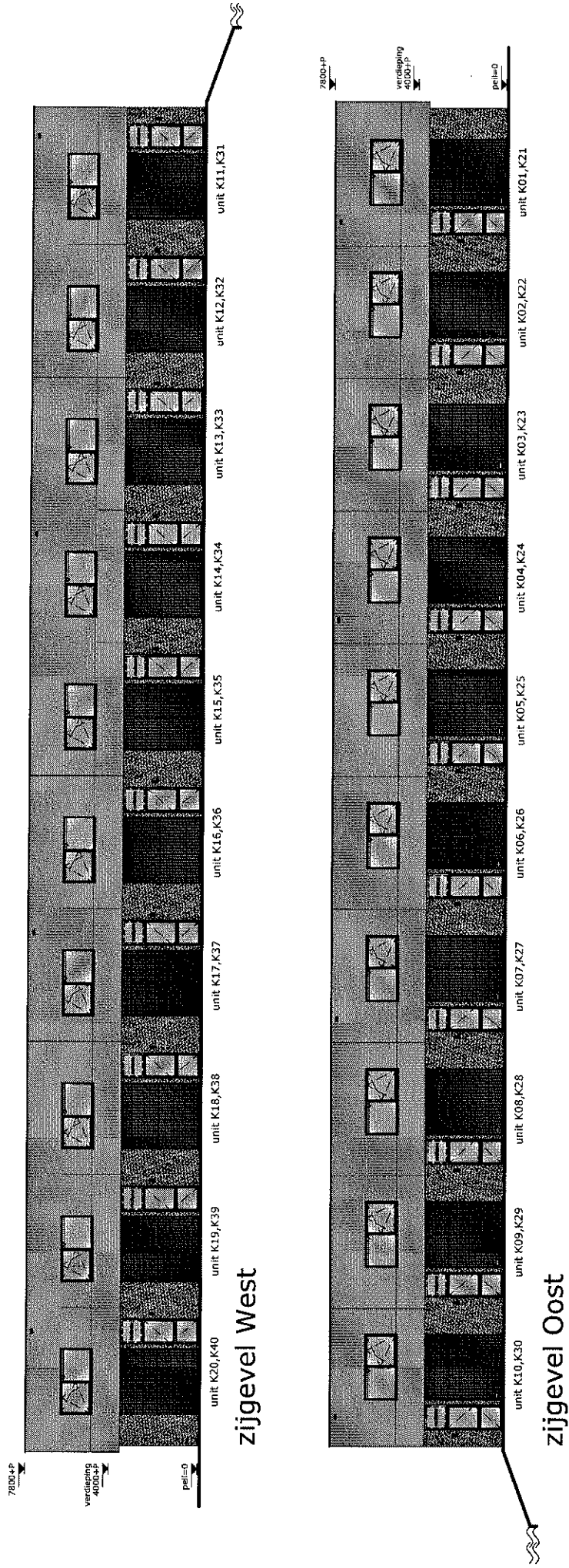
**kopgevel Noord**



**kopgevel Zuid**



**doorsnede**



**zijgevel West**

**zijgevel Oost**

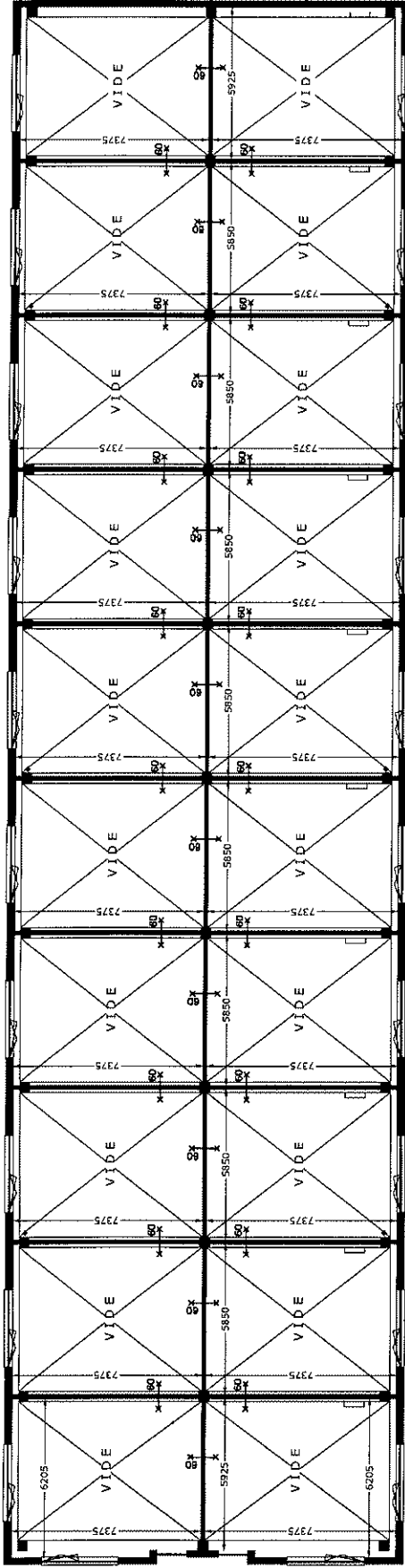
schaal 1:250



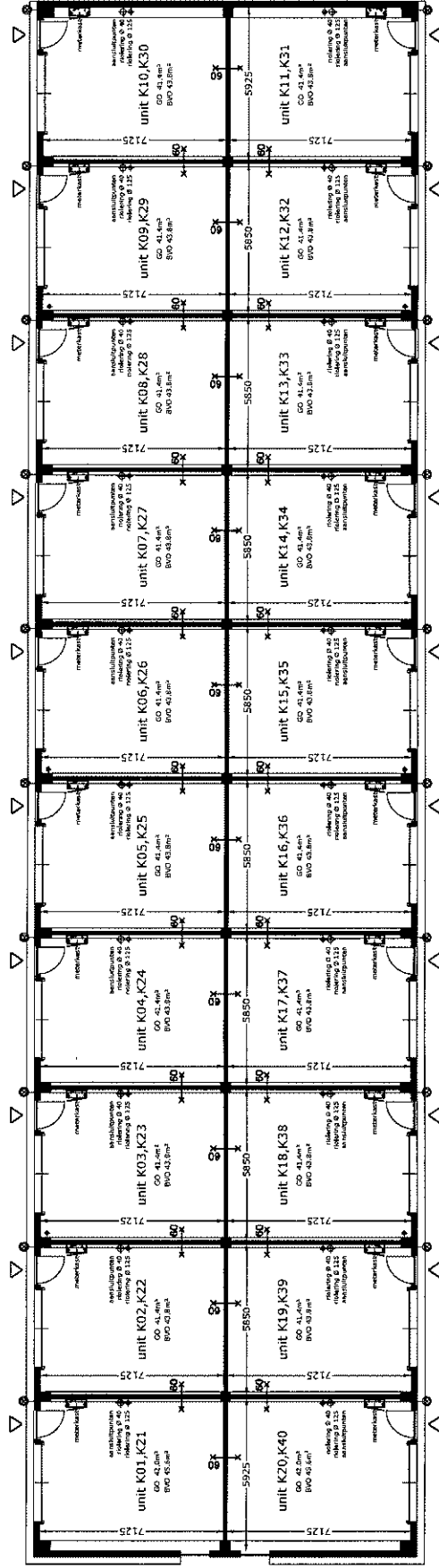
druk- en zeftrouten voorbehouden © Arfan Groep bv 2017

TRADEPARK VENNESTRAAT

TPVI



verdieping



begane grond

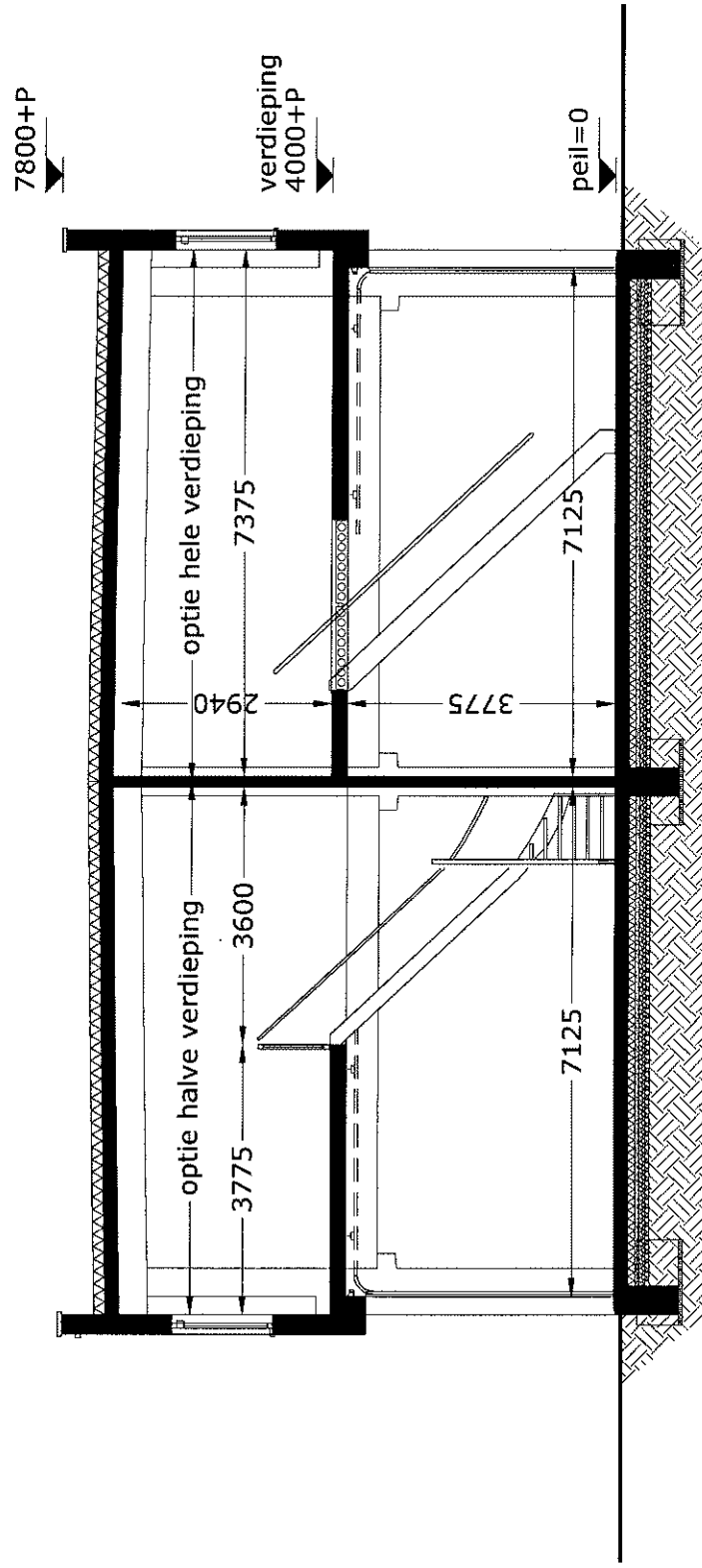
schaal 1:250



druk- en zeffouten voorbehouden © Arfan Groep bv 2017

TRADEPARK VENNESTRAAT

TPV!



doorsnede opties

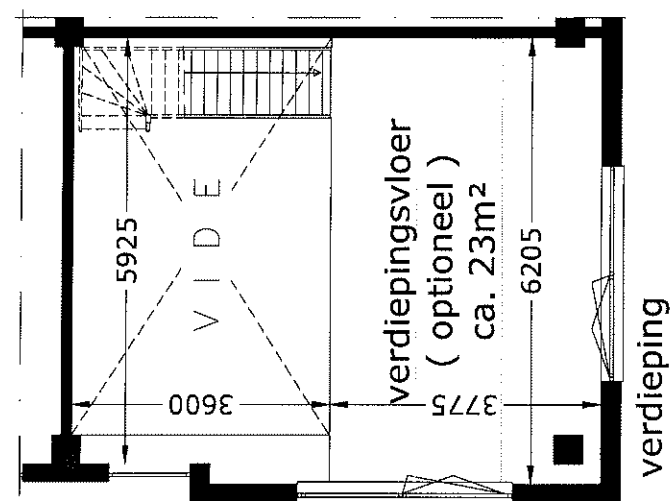
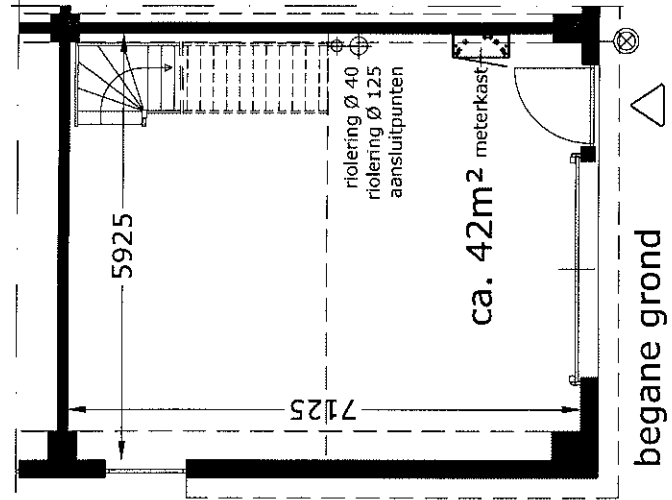
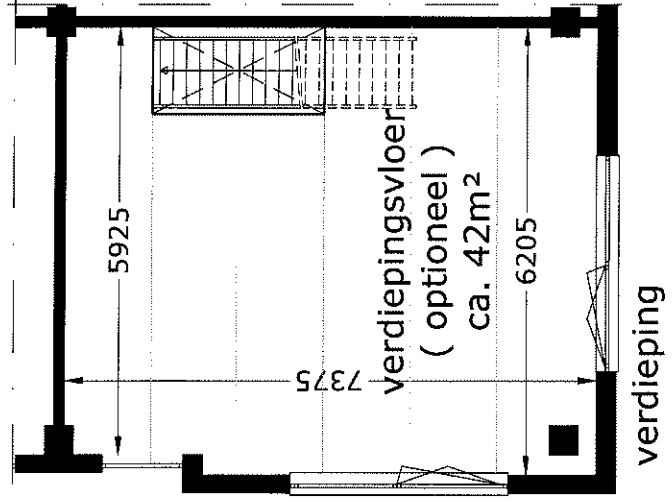
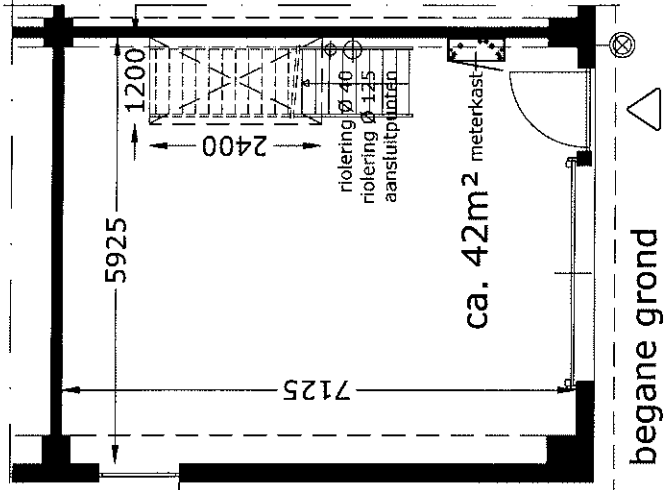
schaal 1:100



druk- en zelfouten voorbehouden © Arian Groep Bv 2017

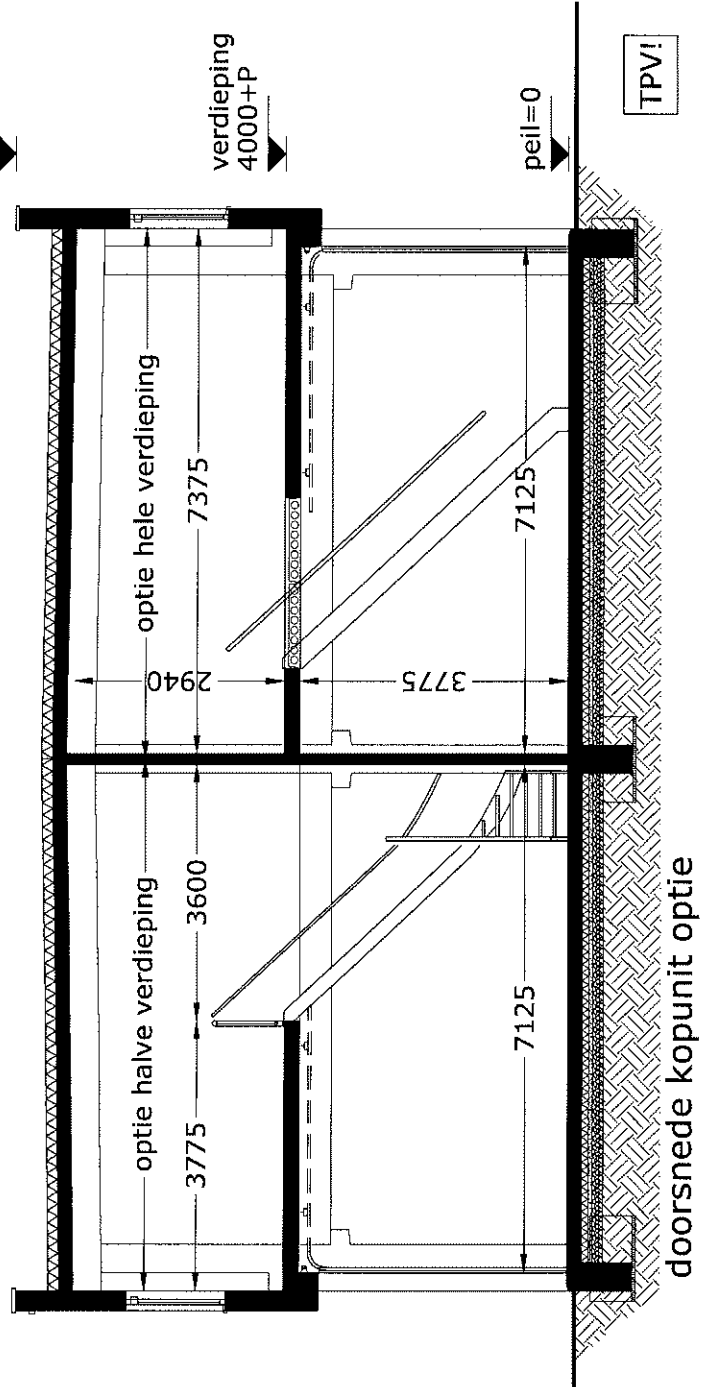
TRADEPARK VENNESTRAAT

TPV!



7800+P

- Renvooi
- ⊗ lichtpunt wand (exclusief armatuur)
  - ⊕ HWA
  - ∇ ventilatie rooster
  - ▣ draaikiepraam
  - ⊠ nood-meterkast met afgedopte aansluitingen (elektra 3x25Amp, gas G4, water Qn=2,5)

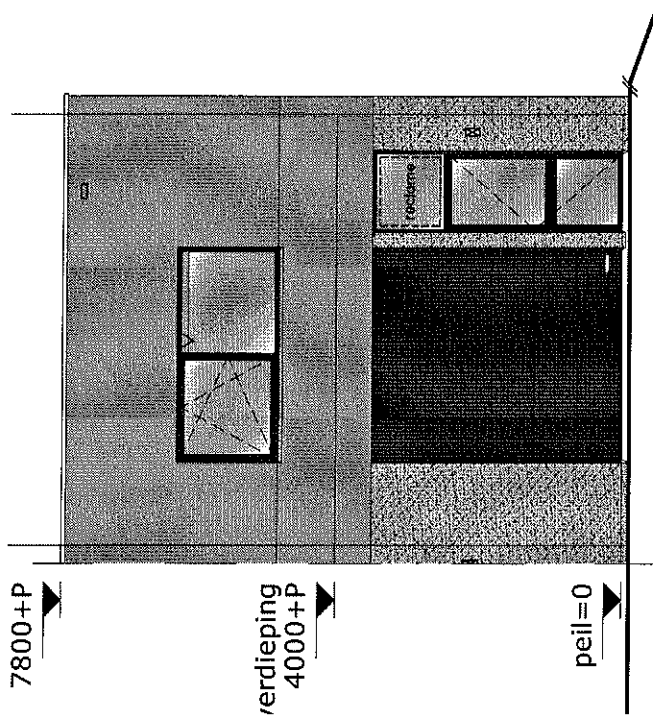


unit kop opties

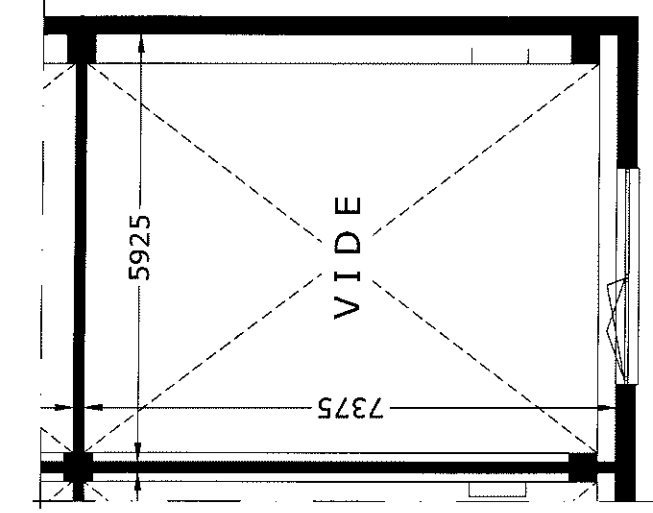
schaal 1:100



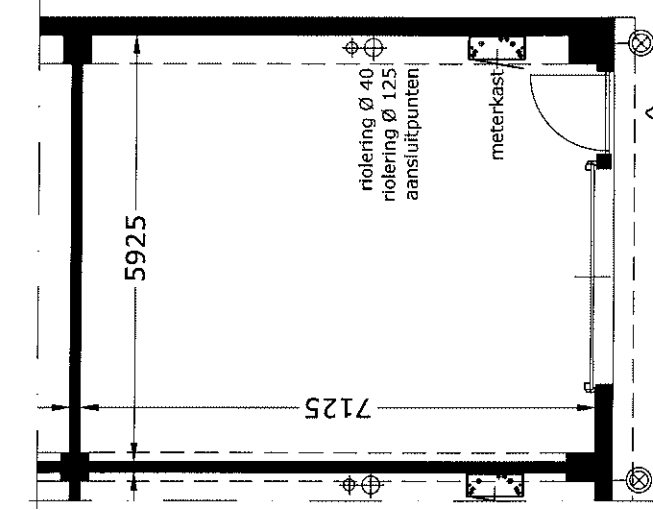
druk- en zelffouten voorbehouden © Artan Groep bv 2017



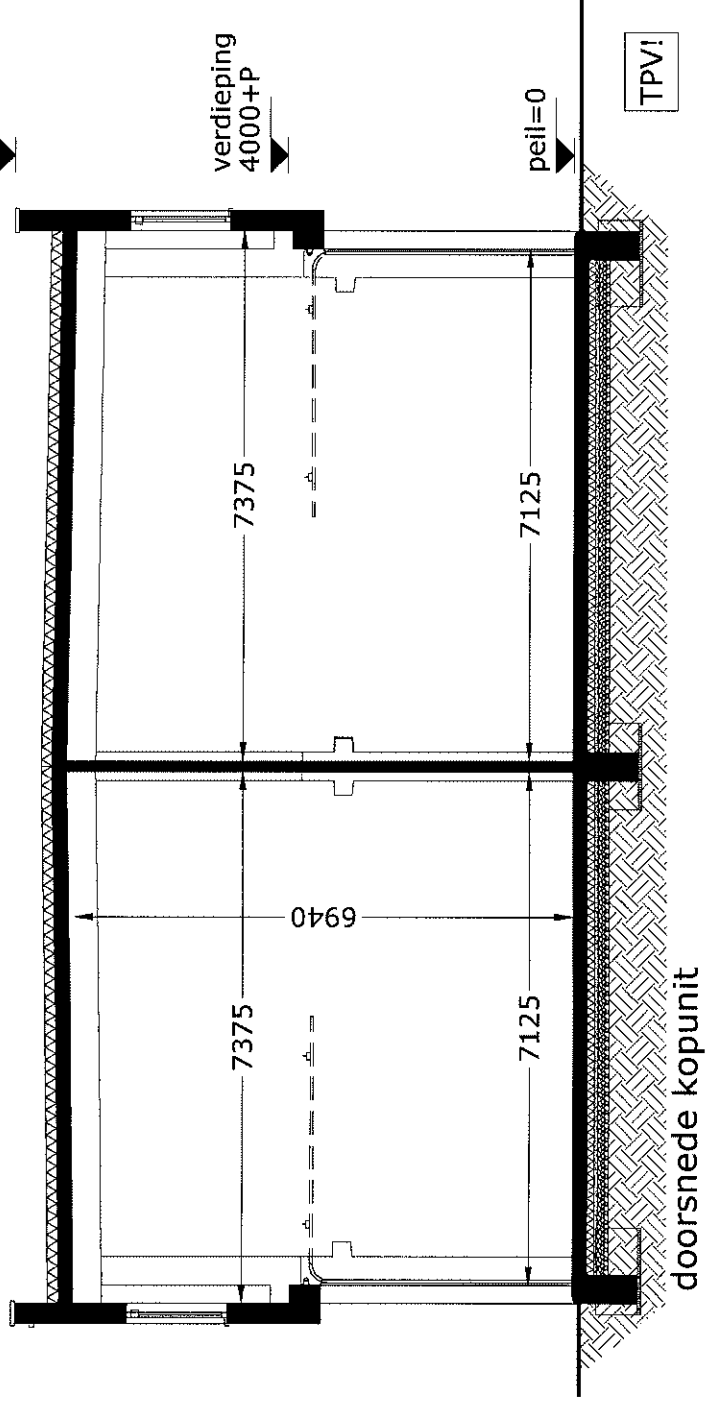
gevelaanzicht



verdieping



begane grond

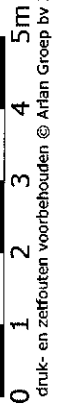


doorsnede kopunit

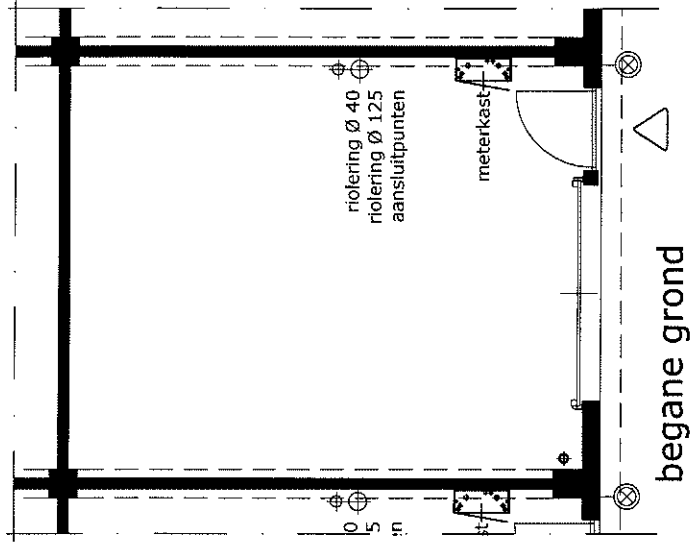
- Renvooi
- ⊗ lichtpunt wand (exclusief armatuur)
  - ⊕ HWA
  - v ventilatie rooster
  - ⊕ draaikiepraam
  - ⊕ nood-meterkast met afgedopte aansluitingen (elektra 3x25Amp, gas G4, water Qn=2,5)

K11 & K31  
gespiegeld; K10 & K30

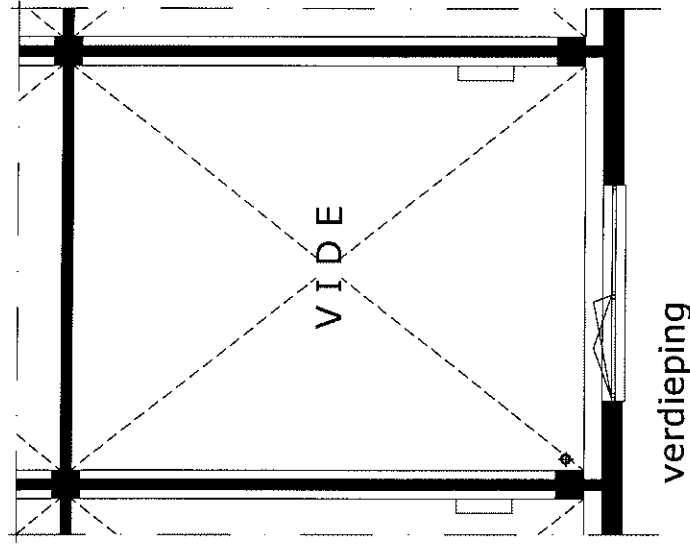
schaal 1:100



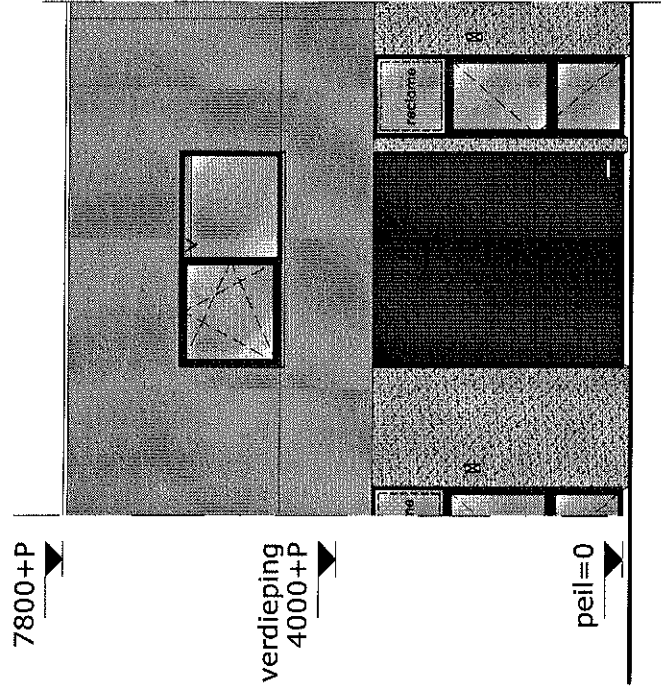
druk- en zelffouten voorbehouden © Arlan Groep bv 2017



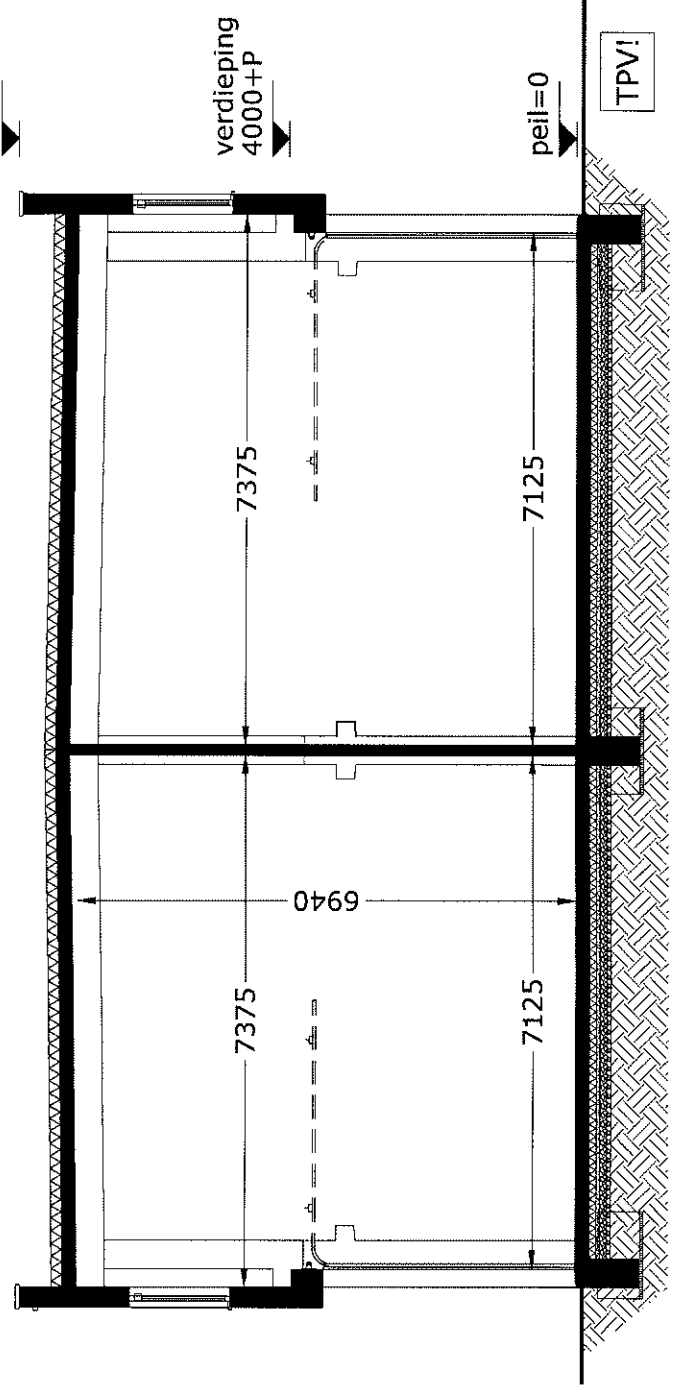
begane grond



verdieping



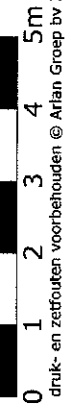
gevelaanzicht



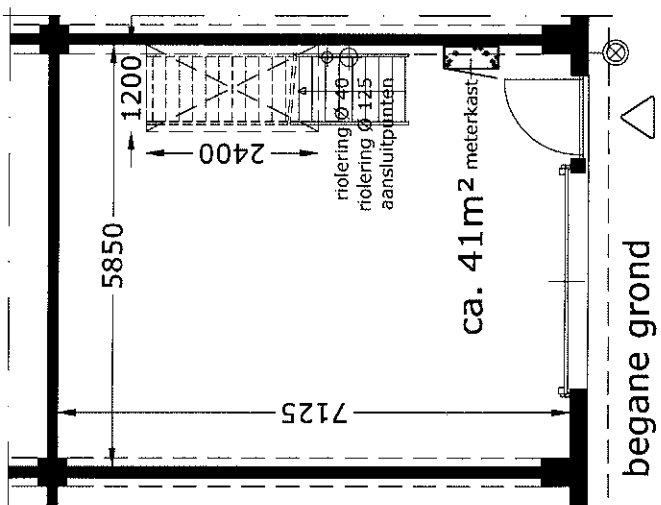
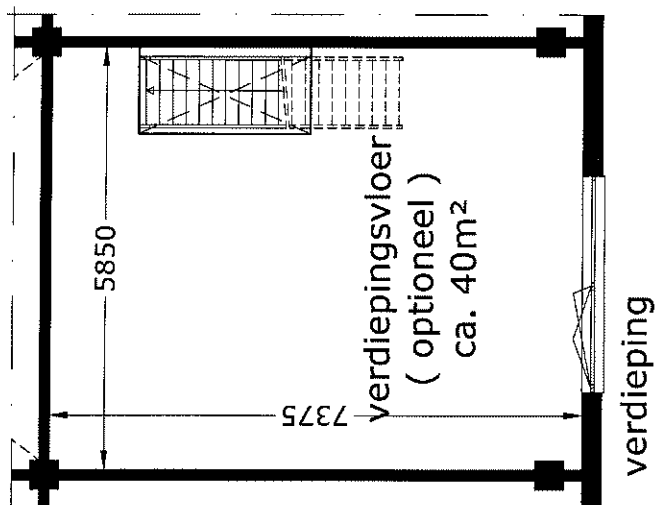
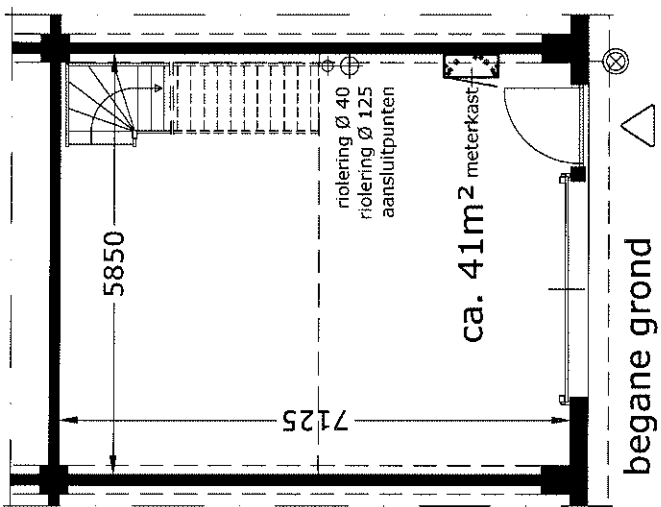
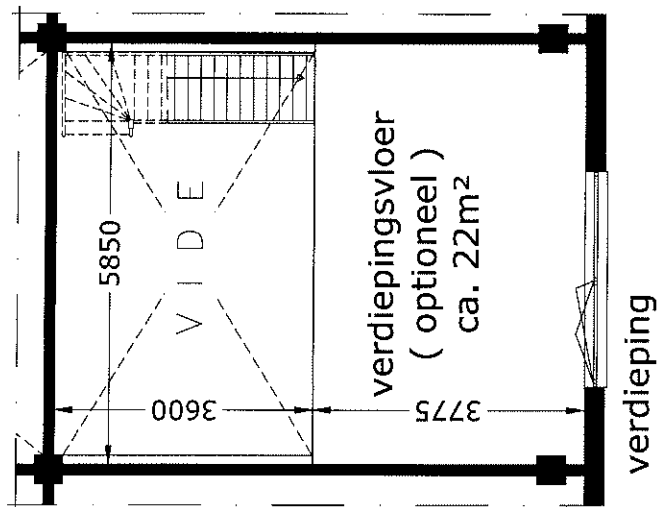
- Renvooi
- ⊗ lichtpunt wand (exclusief armatuur)
  - ⊕ HWA
  - v ventilatie rooster
  - draaikiepraam
  - nood-meterkast met afgedopte aansluitingen (elektra 3x25Amp, gas G4, water Qn = 2,5)

K12-K19 & K32-K39  
gespiegeld; K02-K09 & K22-K29

schaal 1:100

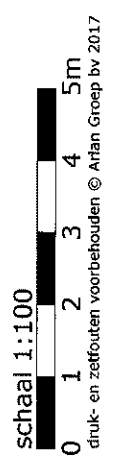


druk- en zetfouten voorbehouden © Arjan Groep bv 2017

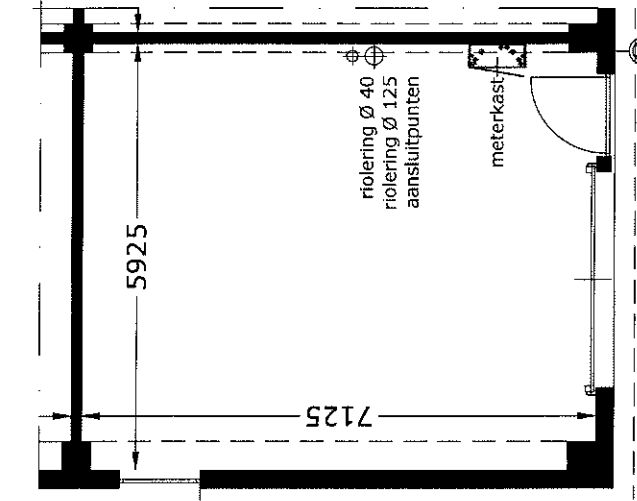


- Renvooi
- ⊗ lichtpunt wand (exclusief armatuur)
- ⊕ HWA
- ∨ ventilatie rooster
- ▭ draaikiepraam
- ⚡ nood-meterkast met afgedopte aansluitingen (elektra 3x25Amp, gas G4, water Qn=2,5)

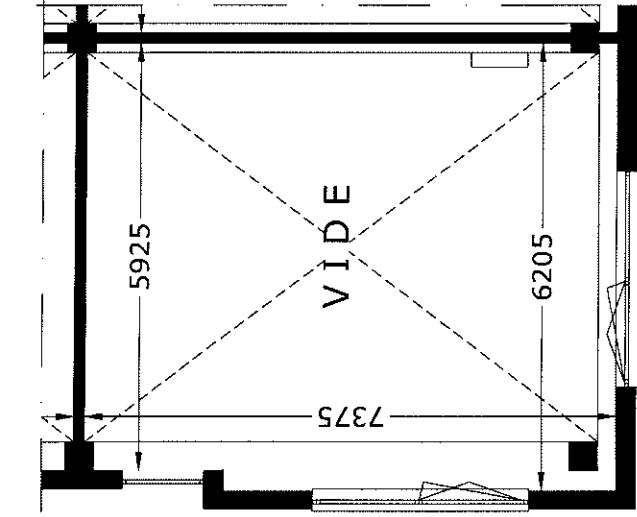
opties  
K12-K19 & K32-K39  
gespiegeld; K02-K09 & K22-K29



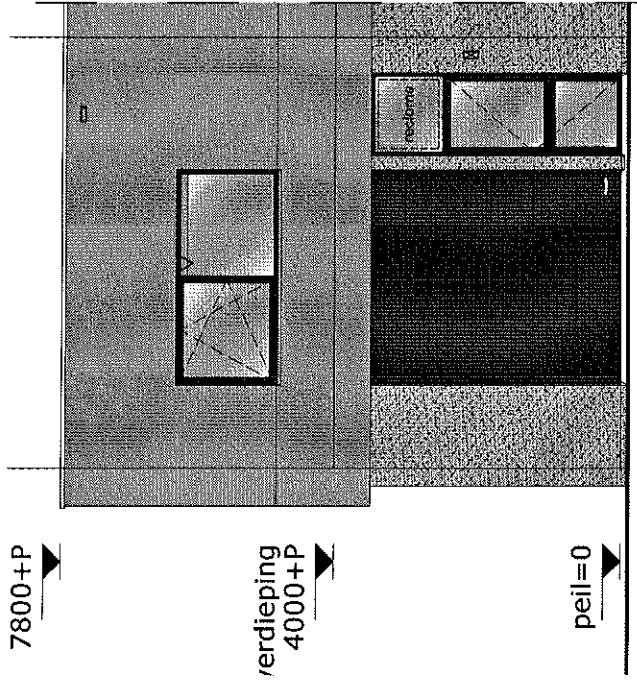




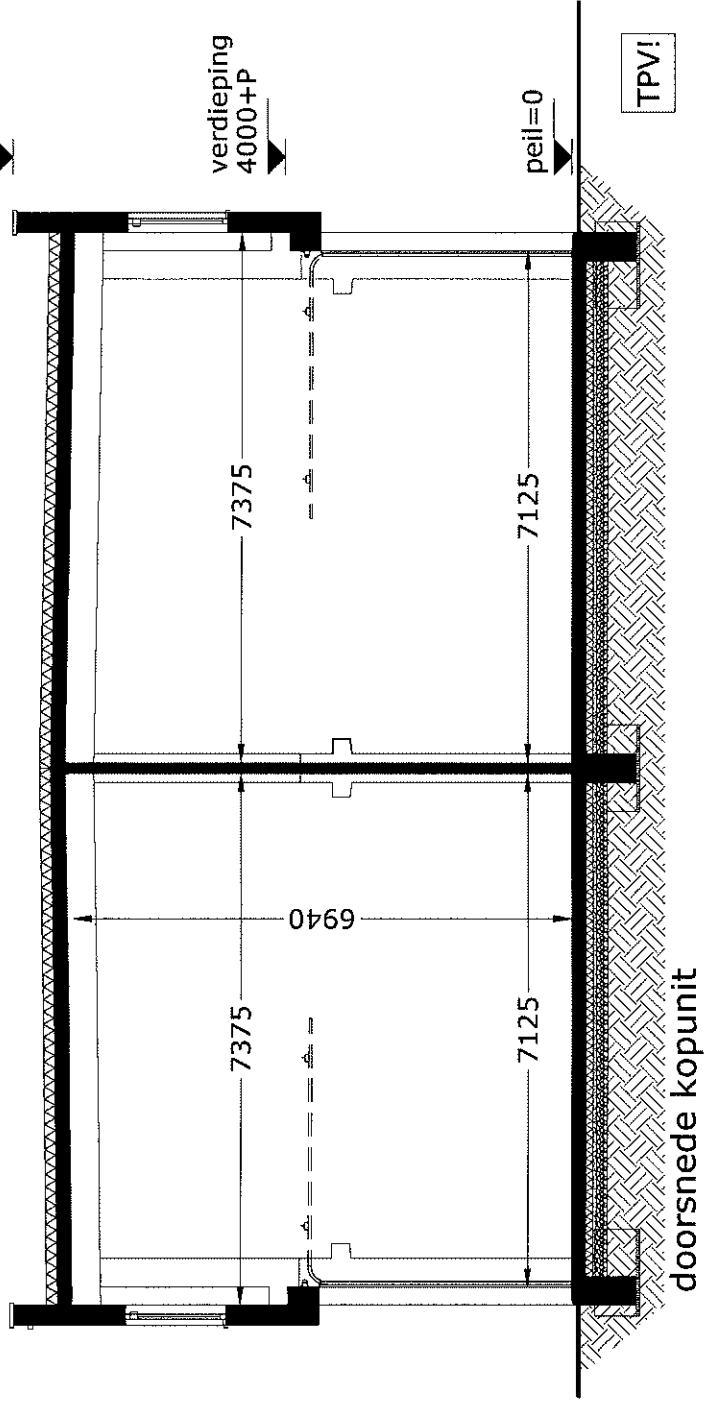
begane grond



verdieping



gevelaanzicht



doorsnede kopniet

**Renvooi**

⊗ lichtpunt wand (exclusief armatuur)

⊕ HWA

v ventilatie rooster

draaikiepraam

nood-meterkast met afgedopte aansluitingen  
(elektra 3x25Amp, gas G4, water Qn=2,5)

**K20 & K40  
gespiegeld; K01 & K21**

schaal 1:100



druk- en zetfouten voorbehouden © Arlan Groep bv 2017